

# TurboDrum IH™

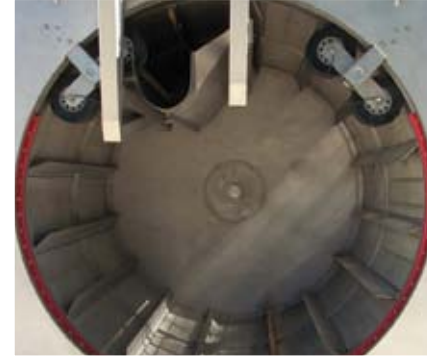
Headworks® Horizontal Drum Screen

Headworks®



## High Volume, Self Cleaning Screening

The TurboDrum IH assembly is comprised of a rotating drum supported on two sets of trunnion wheels at the inlet end and a bearing at the rear. A heavy duty HTD belt linked to the drive system drives the screen drum. The Drainer Screw Press (DSP) is an integral part of the TurboDrum IH assembly and combines washing, de-watering, conveying and Compaction in a single unit.



MODEL	PEAK FLOW GPM (m3/sec)		CHANNEL DIMENSIONS ft (mm)		Weight lb (kg)	Motor rating hP (kW)
	0.12 in. (3 mm) slot size	0.17 in. (4.5 mm) slot size	Width	Depth		
IH90/90	6340 (0.4)	7925 (0.5)	4.0 (1220)	3.9 (1180)	1763 (800)	0.5 (0.4)
IH120/120	11095 (0.7)	12680 (0.8)	5.0 (1520)	4.9 (1480)	3417 (1550)	2.0 (1.5)
IH150/150	19020 (1.2)	21081 (1.3)	6.2 (1896)	6.1 (1860)	4078 (1850)	2.0 (1.5)
IH175/175	28531 (1.8)	30116 (1.9)	7.0 (2140)	7.2 (2200)	5511 (2500)	3.0 (2.2)
IH200/200	31701 (2.0)	34395 (2.2)	8.0 (2440)	7.9 (2400)	7385 (3350)	3.0 (2.2)
IH200/250	41211 (2.6)	44381 (2.8)	8.0 (2440)	7.9 (2400)	8267 (3750)	3.0 (2.2)
IH250/250	42796 (2.7)	46283 (2.9)	10.0 (3020)	9.5 (2900)	8818 (4000)	4.0 (3.0)
IH250/300	53891 (3.4)	57061 (3.6)	10.0 (3020)	9.5 (2900)	9920 (4500)	4.0 (3.0)

The data contained in this table is for information only and values are typical. Please contact Headworks for confirmation.

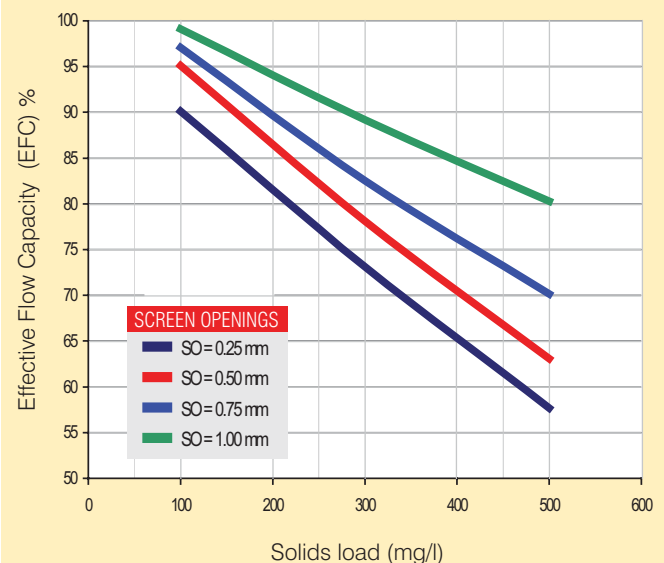
### Choosing the Right Screen for your Application

Use the chart to the right to determine the most effective solution for your application by measuring your Effective Flow Capacity (EFC) related to Total Suspended Solids (TSS) of Fat, Oil and Grease (FOG). Solids quality and concentration, and fats, oil and grease content can significantly affect EFC. A FOG content of 100 mg/l was considered for the curves in the chart. Typical municipal wastewater has an EFC of 250 mg/L

#### Industrial Applications

- Tanning
- Meat processors
- Fish farms
- Food processors
- Rendering plants
- Pulp and paper plants
- Wineries

#### Effective Flow Capacity in Municipal Sewage



For a detailed explanation of Effective Flow Capacity (EFC), contact your local representative or call Headworks at +1.713.647.6667

#### TurboDrum - IH™

*In-channel Horizontal  
Drum Screen*